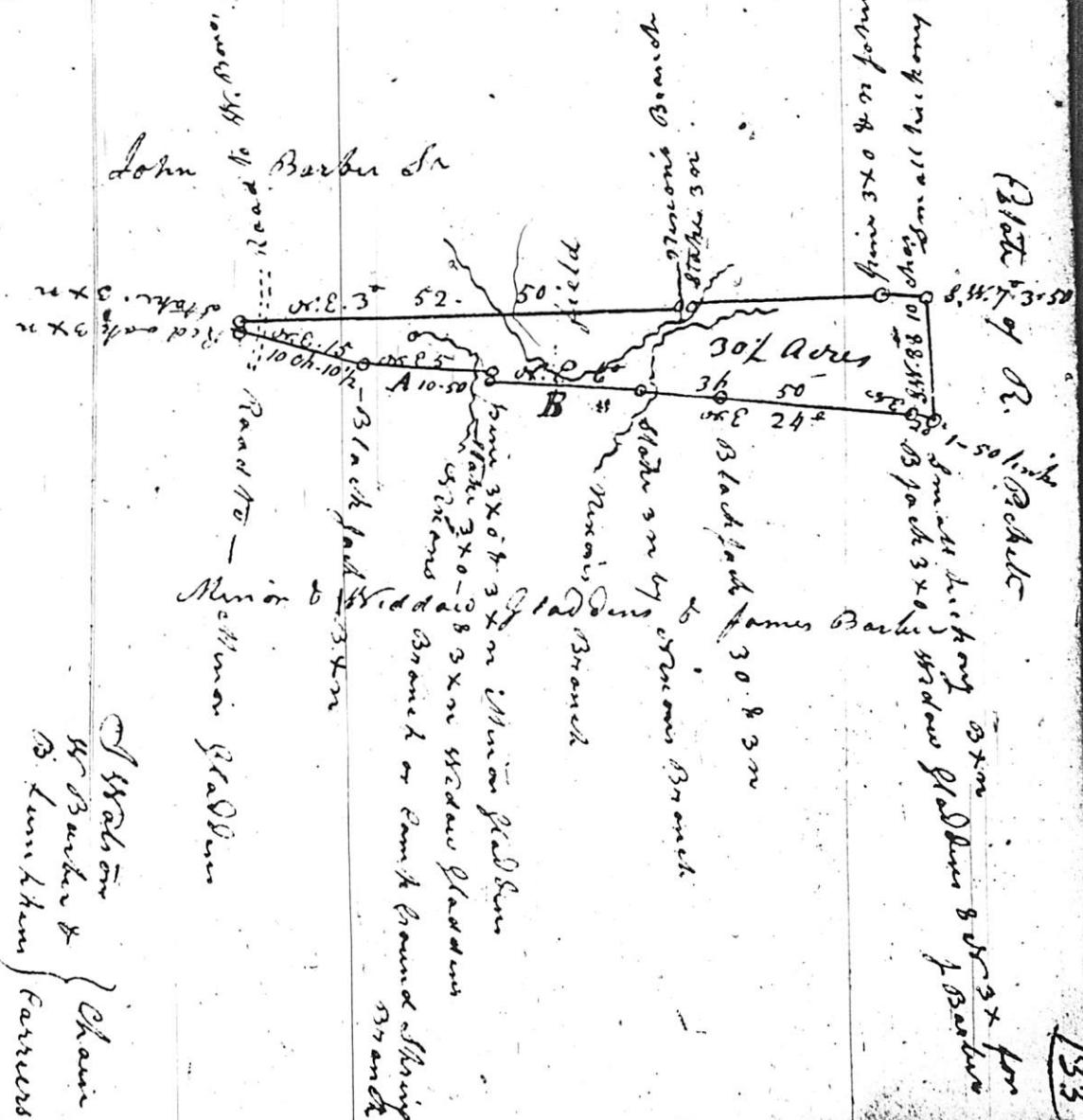


* The line marked B is the same as that marked in the original survey of John Jenkins, now called the Widow Gladders & B. 24th the Back corner, & B. 4th Station makes a distance agreeing, but too great a variation in course, either by the inaccuracy of Surveyors or the Compa^s, I have put down each course the latter on the outside of the line & closing the plot by the course & C. 6th inside of the line - Line from point 3x to Stake Widow Gladders & B. 20 0 38 links Small offset at the Red oak 3x0 to Stake 3x0n 84 88th 10 links.

State of Tenancy Charles James Smith



* The line marked
of John Barber
corner, & B. P.
Marathon in Co
compass, & bar
of the line & c
line - line from
corner small o
10 links o

Scale of twenty Chains per Inch

In pursuance of a warrant from James Elliott Esq Comr of Locations for Fairfield District (State of So Carolina) I have this day surveyed for James Barber Sr a tract of land containing thirty & an half acres bounded on the North End by land supposed to belong to Estate of R. Pickett, on the West Side by land of John Barber Sr & on the East side by lands of Utmore Gladden & the Widow Gladden & James Barber and hath such other marks, Buttresses & boundaries as the above plat Represents - the same situated & being in the District of Fairfield & State of South Carolina on Branches of Wateree Creek, waters of Wateree River - This twenty second day of October A.D. 1834
W B I was not satisfied with the accuracy of this survey on the 22^d of October & was on the land the 28^d October 1834

Recorded Oct 24th 1834

William Moore
Deputy Surveyor